

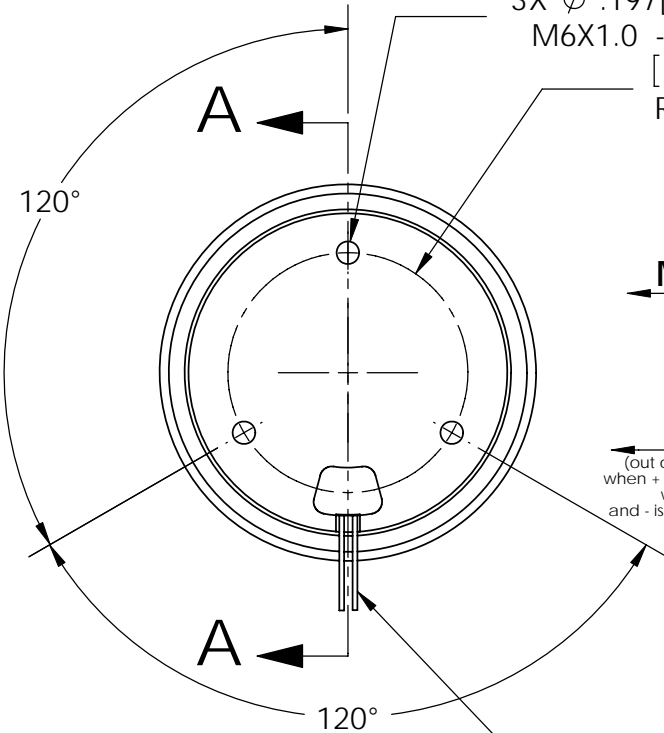
These drawings and specifications are the property of H2W Technologies, Inc. They are issued in confidence and shall not be reproduced, copied, or used without written permission from H2W Technologies, Inc. (www.h2wtech.com)

Moving Coil Assembly (Wound and Encapsulated on a Aluminum Bobbin)

Stationary Magnet Assembly (Nickel Plated CR Steel with Nickel Plated Magnets)

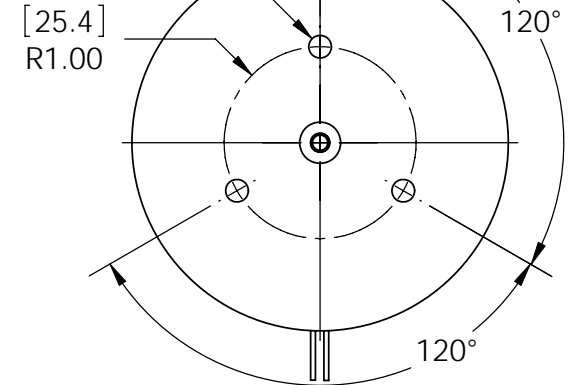
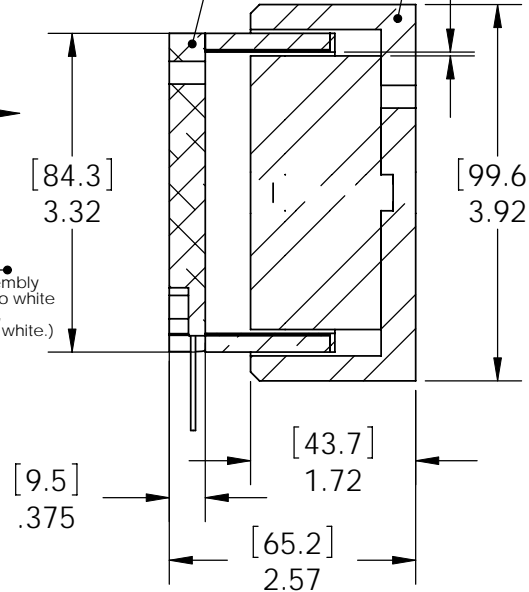
3X ϕ .197[5.0] THRU ALL
M6X1.0 - 6H THRU ALL
[31.8]
R1.25

[1.0]
.040 Radial
Clearance
per side



Motion

Motion
(out of magnet assembly
when + is connected to white
with blue stripe,
and - is connected to white.)



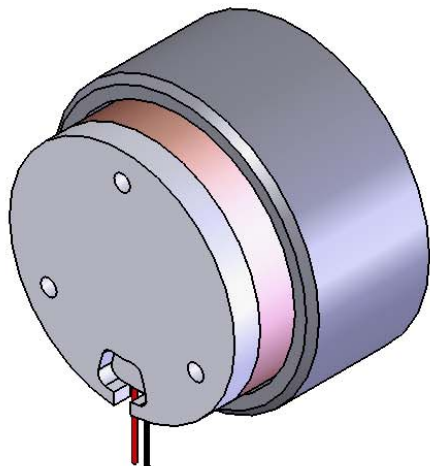
Twisted Shielded
Power Leads [2 m] long

Model Shown at Midstroke
Overall Length Retracted = 2.09in [53.2mm]
Overall Length Fully Extended = 3.04in [77.2mm]

SECTION A-A
SCALE 1 : 2

Notes:

1. All adhesives and epoxies have been selected for their low outgassing characteristics.



H2W Technologies, Inc.

28310-C Ave Crocker Valencia, CA 91355 USA
Tel: (661)-702-9346 Fax: (661)-702-9348
www.h2wtech.com

UNLESS SPECIFIED OTHERWISE:
All dimensions are in inches
Standard Tolerances are as follows
.XXX ±.005 ANGLES ±1°
.XX ±.010 FILLETS .010
.X ±.020 CORNERS .010
Remove All Burrs and Sharp Edges

MATERIAL

FINISH

DRAWN
JRM

DATE
3-18-08

APPROVED
MPW

DATE
3-18-08

TITLE

**Moving Coil Non-Comm Actuator
Model# NCC09-39-190-1V**

DWG #

30-0679

REV

B

SHEET

1 of 2

MOVING COIL NON-COMM ACTUATOR SPECIFICATIONS		
Motor P/N	NCC09-39-190-1V	
Stroke	0.94"	24 mm
Radial Clearance	0.040" per side	1.00 mm per side
Bearing Type	None Provided	
Moving Mass	0.85 lbs	386 grams
Total Mass	5.75 lbs	2.6 kg
Resistance @ 20C	1.00 ohms	
Inductance @ 20C	0.40 mH	
Electrical Time Constant	0.40 msec	
Motor Constant	2.90 LBS/SQRT(Watt)	13.1 N/SQRT(Watt)
Force Constant	3.0 LBS/Amp	13.5 N/Amp
Back EMF	0.3 V/ips	13.5 V/m/sec
Continuous Force	19.6 LBS	87 N
Max Power @ 100% Duty	46 Watts	
Peak Force	58.7 LBS	261 N
Max Power @ 10% Duty	410 Watts	